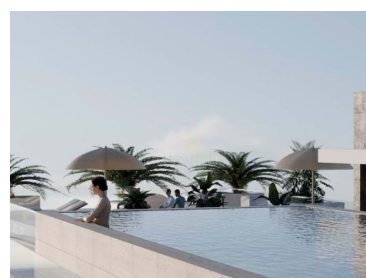





## Funchal (Sé) - Apartment



 2  
Bedrooms

 2  
Bathrooms

 104,68  
Area (m<sup>2</sup>)

**380 000 €**  
(EUR €)

### UPTOWN 32 - T2 (1st floor)

Comfort, style and confidence — come and see the new development in Funchal!

This T2 on the 1st floor of the Uptown 32 building is an excellent opportunity for those looking for a modern apartment, well located and at a great price: €380,000

Apartment features:

- 2 full bathrooms
- Living room with 23 m<sup>2</sup> in open space concept
- Fully equipped kitchen
- Independent laundry room
- Walk-in closet/walk-in closet



**Your Legal Estate**  
Legal Estate

+351 939 079 579 <sup>2</sup>  
yourlegalestate@gmail.com

**T +351 969 476 679 <sup>2</sup> · E geral@legalestate.pt**  
**Rua da Carreira 152 9000-042**  
**AMI 20398**

<sup>1</sup> (Call to national fixed network) | <sup>2</sup> (Call to national mobile network)



LEV-45-25

Reference

Scan the QR code to view the property



- 1 parking space in underground garage
- With high-quality finishes and a functional layout, this T2 is ideal for living in comfort or investing safely.

Advantages of the Uptown 32 development:

- Solid construction by an experienced developer
- Rooftop rooftop infinity pool — enjoy the view
- Large balconies, garage, and underground parking

Flexible payment terms:

- 20% on booking
- 10% with ready-made structure
- Remaining value only in the deed — ideal for bank financing

Strategic location: close to schools, beaches, supermarkets, hospitals and transport

Amparo area with high demand and constant appreciation

Excellent value for money in one of the most sought-after areas of Funchal.

Talk to us and find out which fractions are still available — professional and multilingual service: Portuguese, English, Russian, Ukrainian and French.

## Property Features

• Built year: 2027

• Floors: 7



**Your Legal Estate**

Legal Estate

+351 939 079 579 <sup>2</sup>

yourlegalestate@gmail.com

**T +351 969 476 679 <sup>2</sup> · E geral@legalestate.pt**

**Rua da Carreira 152 9000-042**

**AMI 20398**

<sup>1</sup> (Call to national fixed network) | <sup>2</sup> (Call to national mobile network)